

---

---

# **Gun Lake Family Campground Welcome Book**

**2023**

---

---

# Contents

**Page 3: Emergency Services**

**Page 6: Campground  
Information**

**Page 11: Restaurants**

**Page 16: Grocery**

**Page 17: Gas Stations**

**Page 19: Shopping**

**Page 22: Mechanics/ Hardware**

**Page 26: Pet Supplies/ Veterinarian**

**Page 27: Things To Do**

**Page 31: Trails**

**Page 43: Lakes**

# Emergency Services

# 911

Mcgregor Area Ambulance

Palisade Fire/ First Responders

Aitkin County Sheriff's

Department Non-Emergent:  
(218) 927-7435

---

# Hospitals/ Clinics

**E.R Riverwood Healthcare Center (13.3 Miles)**  
200 Bunker Hill Dr, Aitkin, MN 56431  
(218) 927-2121

**E.R Grand Itasca Clinic and Hospital**  
**(50.4 Miles)**  
1601 Golf Course Rd, Grand Rapids, MN  
55744  
(218) 326-3401

**E.R Essentia Health (51.3 Miles)**  
4572 Co Rd 61, Moose Lake, MN 55767  
(218) 485-4481

**E.R Cuyuna Regional Medical Center**  
**(27.4 Miles)**  
320 E Main St, Crosby, MN 56441  
(218) 546-7000

**Riverwood McGregor Clinic (13.9 Miles)**  
2 E Center Ave, McGregor, MN 55760  
(218) 768-4011

**Mille Lacs Health System (32.3 Miles)**  
27378 MN-18, Garrison, MN 56450  
(320) 692-5599

# Aitkin County Government Offices

Help Line: (218) 927-7276

Court Administration: (218) 927-7350

Health and Human Services: (218) 927-7200

Highway Department: (218) 927-3741

Planning and Zoning: (218) 927-7435

Passport Appointments: (218) 927-7332

Land and Parks Department: (218) 927-7364

Minnesota Department of Natural Resources:  
(651) 296-6157

Turn-In Poachers (TIP) Hotline:  
1-800-652-9093

# Gun Lake Family Campground Information

**Address:**

43016 328th Place  
Palisade MN, 56469

**Phone:**

(218) 670-1462

**Email:**

gunlakefamilycampground@gmail.com

**Website:**

<https://gunlakefamilycamp.wixsite.com/gun-lake-family-camp>

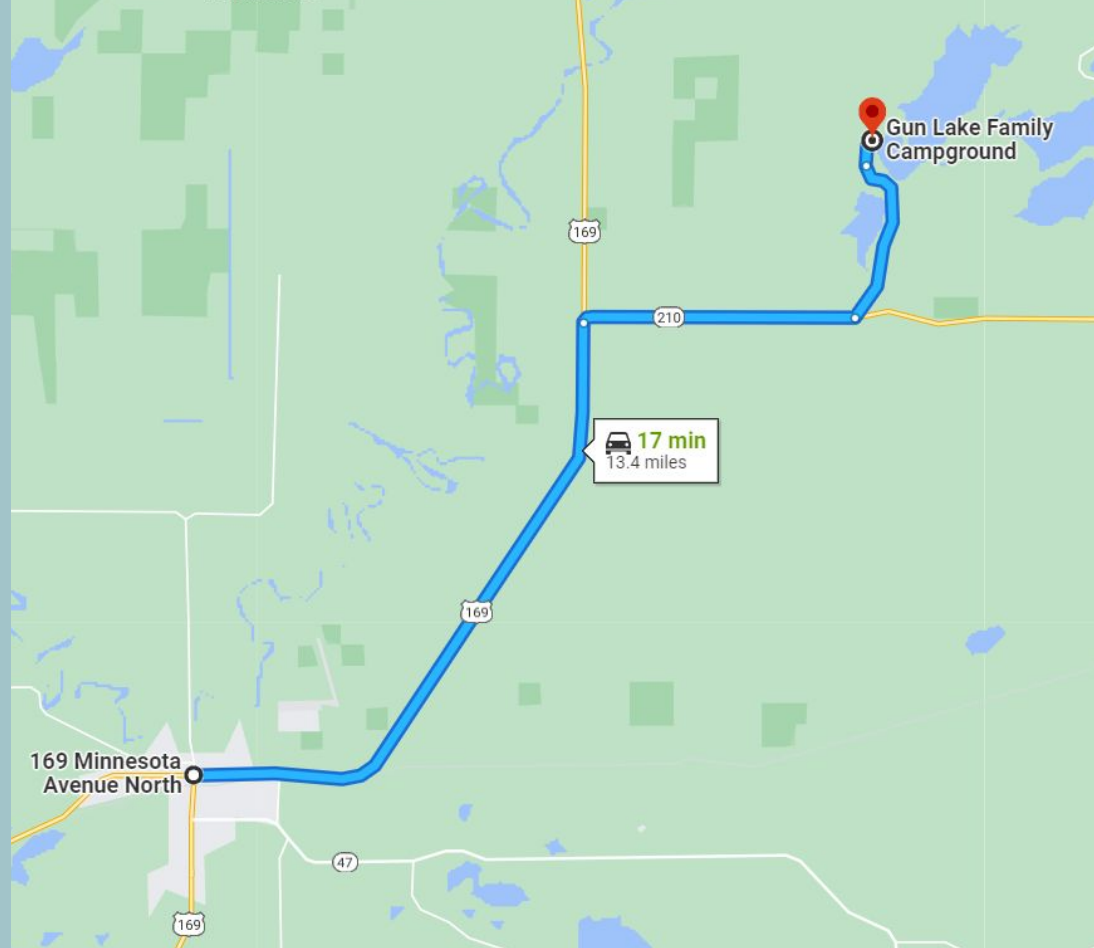


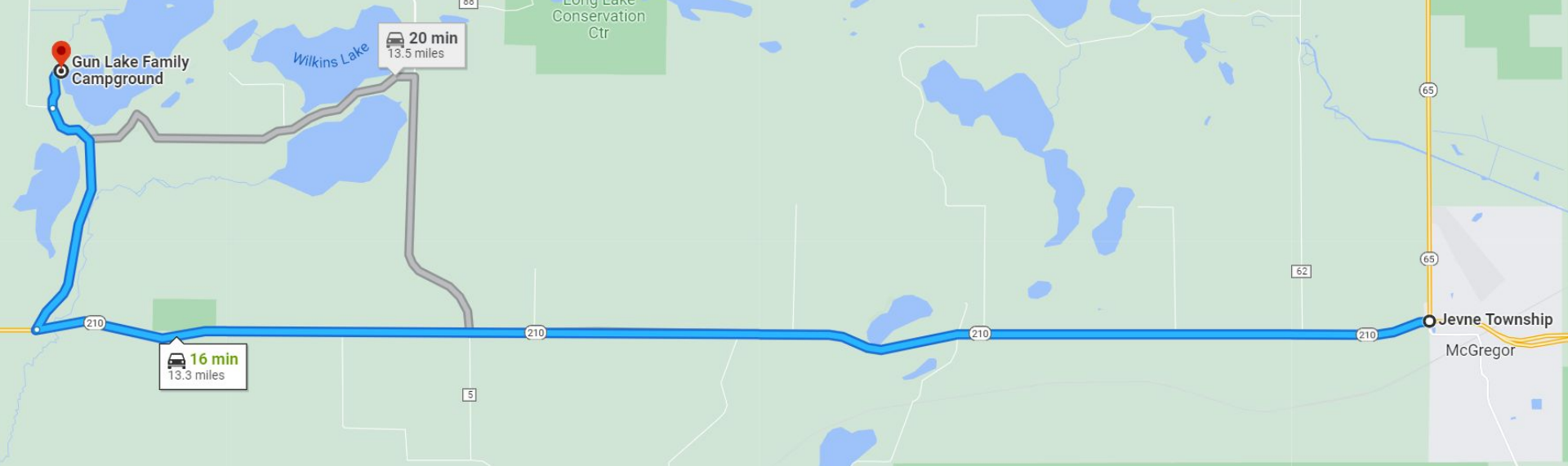
## Directions from US-169 in Aitkin

Head East on US-169 for 8  
Miles.

Turn right onto MN-210 E and  
continue for 3 miles.

Turn Left onto 328th Ave and  
follow the directions on page 9.





Directions from MN-65 in McGregor

Head West on MN-210 W for 11 Miles.

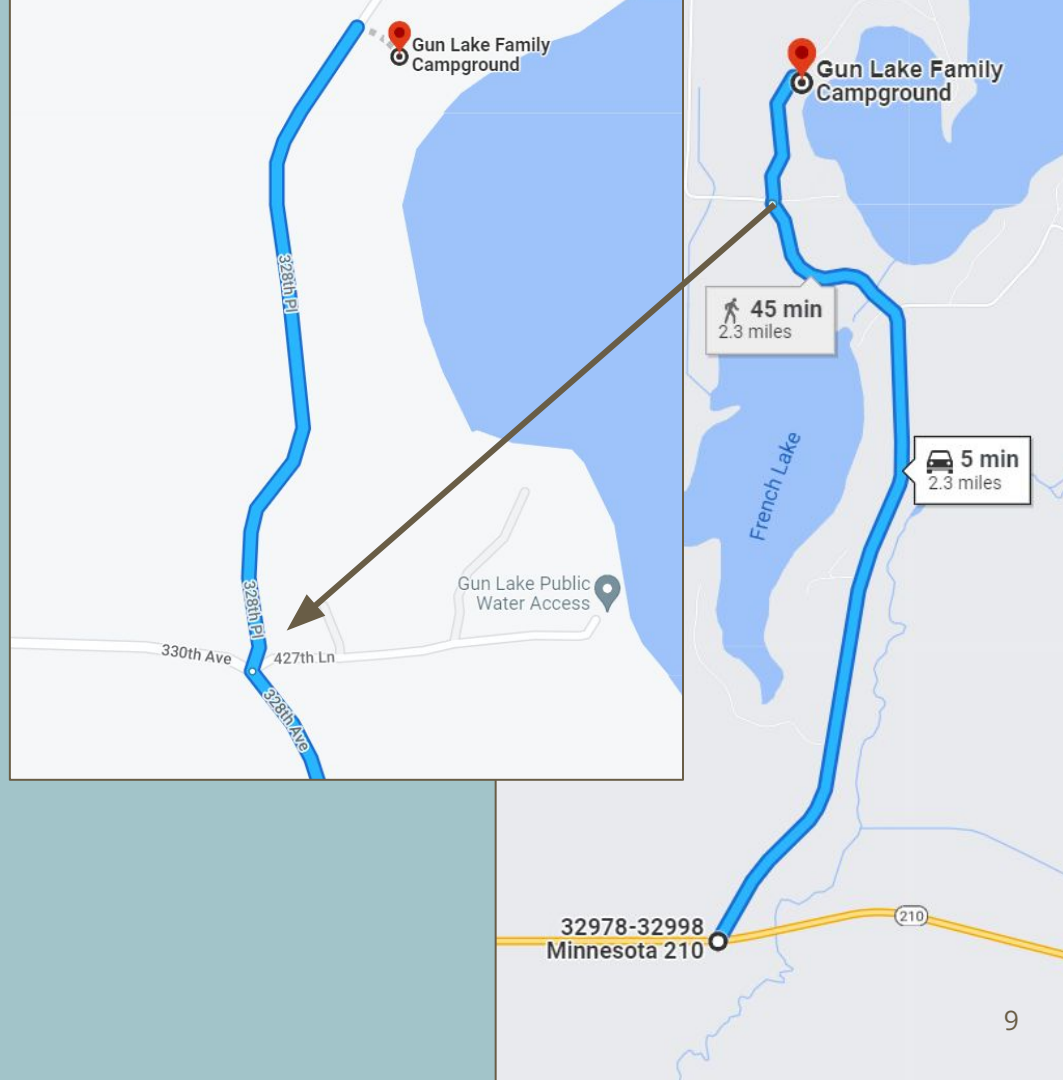
Turn right onto 328th Ave and follow the directions on page 9.

## Directions from MN-210

Head Northeast on 328th Ave  
(Gun Lake Road) for 2 Miles.

At the intersection, continue  
straight on the “Dead End” Road  
for 0.3 Miles. Use caution and respect  
others. The road is one lane only parallel  
to the lake. There is NO SHOULDER.

The Campground is on the right.  
Turn at the first driveway onto  
“The Lakeside Road” to go to the  
office. This is a one way road.



# About the Campground

The Gun Lake Family Campground was opened in the spring of 2023, after a year and a half of construction. The property was originally a hay field and pasture. Relatives to the Hagel's bought the land and continued to farm for many years. They planted Scotch Pines on the Lakeside in 1985 to harvest for christmas trees. The trees grew too big and were never sold. These are the trees beautifully placed amongst the sites. When the Hagel's decided to build the campground, they knew the perfect location.

There's plenty to keep you entertained here at the Campground. Panfish to catch just off the dock, deer visits in the evening, and the beautiful sunsets. Yet, here is some important information and a few recommendations for the area. We invite you to support local businesses as much as you can. Welcome!

# Restaurants

Page 12: Palisade

Page 13: McGregor

Page 14: North McGregor

Page 15: Aitkin

---

# Palisade

## **Gabby's Eats and Treats**

303 Main St, Palisade, MN 56469  
(218) 845-1000

## **Rustic Trail**

204 Main St, Palisade, MN 56469  
(218) 845-2127

## **Palisade Cafe 2.0**

210 Main St, Palisade, MN 56469  
(218) 845-3002



Photo provided by Carol Halgrimson in association  
with the "Palisade, MN Friends" Facebook page.

# McGregor

## **Fireside Inn**

415 Meadow Dr, McGregor, MN 55760  
(218) 768-3818

## **Buckhorn Bar and Grill**

105 S Maddy St, McGregor, MN 55760  
(218) 476-4263

## **Mark's Bar**

148 W, MN-210 McGregor, MN 55760  
(218) 426-8040

## **School House Cafe**

14 Country House Ln, McGregor, MN 55760  
(218) 768-2403

## **Log Home Wood Fired Pizza**

242 MN-210, McGregor, MN 55760  
(218) 768-7992

## **McGregor Baking Co & Cafe**

201 MN-210, McGregor, MN 55760  
(218) 768-2253

## **Dairy Queen**

259 MN-65, McGregor, MN 55760  
(218) 768-2050

## **Subway**

243 E Hwy 210, McGregor, MN 55760  
(218) 768-7827

# North McGregor

## **T-Bones Kansas City Style BBQ Takeout and Catering**

43086 MN-65, McGregor, MN 55760  
(218) 768-8800

## **Bann's Bar and Restaurant**

18870 Goshawk ST, McGregor MN 55760  
(218) 426-3450

## **The Craft House**

19037 Goshawk St, McGregor, MN 55760  
(218) 419-0699

## **Fisherman's Bay**

50933 MN-65, McGregor, MN 55760  
(218) 426-4662

## **Red Rock Bar and Grill**

49463 202nd Pl, McGregor, MN 55760  
(218) 426-5275

## **Zorbaz**

48760 MN-65, McGregor, MN 55760  
(218) 426-3665

## **Shillelagh's Tap and Grill**

25247 480th St, McGregor, MN 55760  
(218) 426-4444

## **Hillcrest Resort**

20590 498th Ln, McGregor, MN 55760  
(218) 426-3323

## **The Sandy Beaver**

51866 224th Pl, McGregor, MN 55760  
(218) 426-3011

## **The Roasting House**

47952 MN-65, McGregor, MN 55760  
(218) 426-5466

# Aitkin

## **Block North Brew Pub and Locker Room**

302 Minnesota Ave N, Aitkin, MN 56431  
(218) 928-8090

## **Smokey Jake's BBQ Restaurant**

12 2nd St NW, Aitkin, MN 56431  
(218) 928-8100

## **Forty Club Restaurant and Bar**

950 2nd St NW, Aitkin, MN 56431  
(218) 927-7090

## **Roadside Restaurant**

306 2nd St NE, Aitkin, MN 56431  
(218) 927-2113

## **Rosallini's**

119 Minnesota Ave N, Aitkin, MN 56431  
(218) 927-6412

## **The Beanery Cafe and Roastery**

221 Minnesota Ave N, Aitkin, MN 56431  
(218) 927-7811

## **Subway**

7 2nd St NE, Aitkin, MN 56431  
(218) 927-7827

## **McDonald's**

650 2nd St NE, Aitkin, MN 56431  
(218) 927-2120

## **Dairy Queen**

221 2nd St NE, Aitkin, MN 56431  
(218) 927-2918

# Grocery

Farmers markets are available in the area, ask management for the latest hours and locations for fresh produce and homemade goods!

## Ukura's Big Dollar Store

41561 MN-65

McGregor, MN 55760

(218) 768-2666

Delivery Available

## Paulbeck's County Market

171 Red Oak Dr

Aitkin, MN 56431

(218) 927-6919

Delivery Available

---

# Palisade and McGregor Gas Stations

## **Palisade One Stop**

307 Main St, Palisade, MN 56469  
(218) 845-2156

## **Palisade Co-Op Oil Association**

212 Main St, Palisade, MN 56469  
(218) 845-2333

## **Holiday**

200 W, MN-210 McGregor, MN 55760  
(218) 768-4444

## **Willey's Sports Shop and Spirits**

46054 MN-65, McGregor, MN 55760  
(218) 426-3382

## **McGregor Oil**

257 W, MN-10, McGregor, MN 55760  
(218) 768-2055

## **Sather's Gateway Store**

47952 MN-65, McGregor, MN 55760  
(218) 426-3255

# Aitkin Gas Stations

## **Rasley Oil Co**

308 2nd St NE, Aitkin, MN 56431  
(218) 927-2966

## **Marathon**

13 2nd St NW, Aitkin, MN 56431  
(218) 927-2720

## **Holiday**

1 Minnesota Ave S, Aitkin, MN 56431  
(218) 927-1986

## **Paulbeck's County Market**

(see grocery on page 16)



Photo submitted by Randy Wall to  
"The Chronicle of Aitkin Minnesota"

# Shopping

Page 21: McGregor

Page 22: Aitkin

---

# McGregor

## NeighborGoods

96 N Maddy St, McGregor, MN 55760  
(218) 300-0267

## Tammy's Consignment Sales

45993 MN-65, McGregor, MN 55760  
(218) 451-4798

## Angels of McGregor Minnesota

7 S Maddy St, McGregor, MN 55760  
(218) 768-2762



McGregor Wild Rice Days Parade 2019 per the McGregor  
Chamber of Commerce

# Aitkin

## **Curio North**

118 Minnesota Ave N, Aitkin, MN 56431  
(612) 315-7887

## **Aitkin Flowers and Gifts**

1 2nd St NW, Aitkin, MN 56431  
(218) 927-2815

## **Toby's Thrift Shop**

201 Southgate Dr, Aitkin, MN 56431  
(218) 927-4413

## **Adventure North MN**

210 Minnesota Ave N, Aitkin, MN 56431  
(218) 429-0500

## **Green Owl Gallery**

214 Minnesota Ave N, Aitkin, MN 56431  
(218) 251-0021

## **This & That & Everything Else**

217 Minnesota Ave N, Aitkin 56431

## **Bginagins**

112 Minnesota Ave N, Aitkin, MN 56431

## **Booktowne**

205 Minnesota Ave N, Aitkin, MN 56431

## **Aitkin Secondhand**

16 2nd St NW, Aitkin, MN 56431  
(218) 838-4532

# Mechanics & Hardware

Page 23: McGregor

Page 24: Aitkin

---

# McGregor

## **Ace Hardware**

22055 MN-210, McGregor, MN 55760  
(218) 419-2920

## **NAPA Auto Parts**

293 N Maddy St, McGregor, MN 55760  
(218) 768-3132

## **Meyer's Service Center**

22108 450th St, McGregor, MN 55760

## **Willey's Sports Shop and Spirits**

(see Gas Stations)

## **AutoSmith Service Group**

95 N Maddy St, McGregor, MN 55760

# Aitkin

## **Johnny's Garage**

40930 US-169, Aitkin, MN 56431  
(612) 570-5199

## **Chevrolet Service**

702 2nd St NE, Aitkin, MN 56431  
(218) 927-2713

## **Tire Barn**

10 Maryhill Ln, Aitkin MN 56431  
(218) 927-1444

## **Paradigm Automotive**

995a 2nd St NW, Aitkin MN 56431  
(218) 451-4796

## **B.I.C. Repair**

42299 MN-210, Aitkin, MN 56431  
(218) 429-1881

## **Bill's Sportsmans Service**

649 2nd St NE, Aitkin, MN 56431  
(218) 927-2552

## **Dotzler Power Equipment**

315 1st Ave NW, Aitkin, MN 56431  
(218) 927-6144

## **Riley Auto Supply (Napa)**

18 2nd St NW, Aitkin, MN 56431  
(218) 927-2153

## **Midwest Machinery Co.**

1120 2nd St NW, Aitkin, MN 56431  
(218) 927-2140

## **Auto Value Aitkin**

995 2nd NW, Aitkin, MN 56431  
(218) 927-3728

## **O'Reilly's Auto Parts**

14 4th St SE, Aitkin, MN 56431  
(218) 927-3800

## Aitkin Cont.

### **Unclaimed Freight**

42190 MN-210, Aitkin, MN 56431  
(218) 927-6446

### **Hometown Building Supply**

401 Minnesota Ave N, Aitkin, MN 56431  
(218) 927-7077

### **Beartooth True Value Hardware**

150 Southgate Dr, Aitkin MN 56431  
(218) 300-0324

### **Hyytinen Hardware Hank**

312 2nd St NE, Aitkin, MN 56431  
(218) 927-3117



Photo from LakesnWoods Website

# Pet Supplies/ Veterinarian

## **Aitkin Feed and Farm Supply**

108 Air Park Dr, Aitkin, MN 56431  
(218) 927-3112

## **Iron Range Vet Clinic**

21462 Gilmer Rd, Crosby, MN 56441  
(218) 546-5470

(They have appointments available  
in Aitkin a couples days a week)

---

# Things To Do

Page 28: Locations

Page 29: Events/ Event Centers

---

# Locations

## **Jaques Art Center**

121 2nd St NW, Aitkin, MN 56431  
(218) 927-2363

## **Aitkin County Historical Society and Depot Museum**

20 Pacific St SW, PO box 215, Aitkin MN 56431  
(218) 927-3348

## **Big Sandy Fire Tower**

50139 197th Ave, McGregor, MN 55760

## **Gilby's Nursery & Orchard**

30069 MN-210, Aitkin, MN 56431  
(218) 670-1232

## **The Ditch Ducks of MN 65**

46.393942, -93.261595

## **Minnesota National Golf Club & Resort**

23247 480th St, McGregor, MN 55760  
(218) 426-4444

## **Cuyuna Rolling Hills (Golf)**

20441 MN-6, Deerwood, MN 56444  
(218) 534-3489

## **Emily Greens Golf Course**

39966 Refuge Rd, Emily, MN 56447

# Locations Cont.

## **Aitkin Lanes**

104 4th St NE, Aitkin, MN 56431  
(218) 927-6701

## **McGregor Lanes**

9 N Maddy St, McGregor, MN 55760  
(218) 768-2345

## **Rialto Theatre**

220 Minnesota Ave N, Aitkin, MN 56431  
(218) 927-2824

## **Cuyuna Area Biking Trails**

<https://www.cuyunalakesmtb.com/maps>

# Events/ Event Centers

## **Aitkin County Fair**

632 Minnesota Ave N, Aitkin MN 56431

## **Aitkin Riverboat Heritage Days**

First Weekend in August

## **Aitkin Fish House parade**

Friday after Thanksgiving Day

## **McGregor Wild Rice Days**

Labor Day weekend

## **Larson's Barn**

47987 240th Ave, McGregor, MN 55760  
(218) 426-3648

## **Palisade Riverfest**

Second weekend of August

## **Palisade Mid-Winter Festival**

First weekend of February

# ATV Trails

Page 32: General Trails

Page 33: Soo Line South

Page 34: Soo Line North

Page 35: Solana Loop

Page 36: Red Top

Page 37: Moose River

Page 38: Lawler

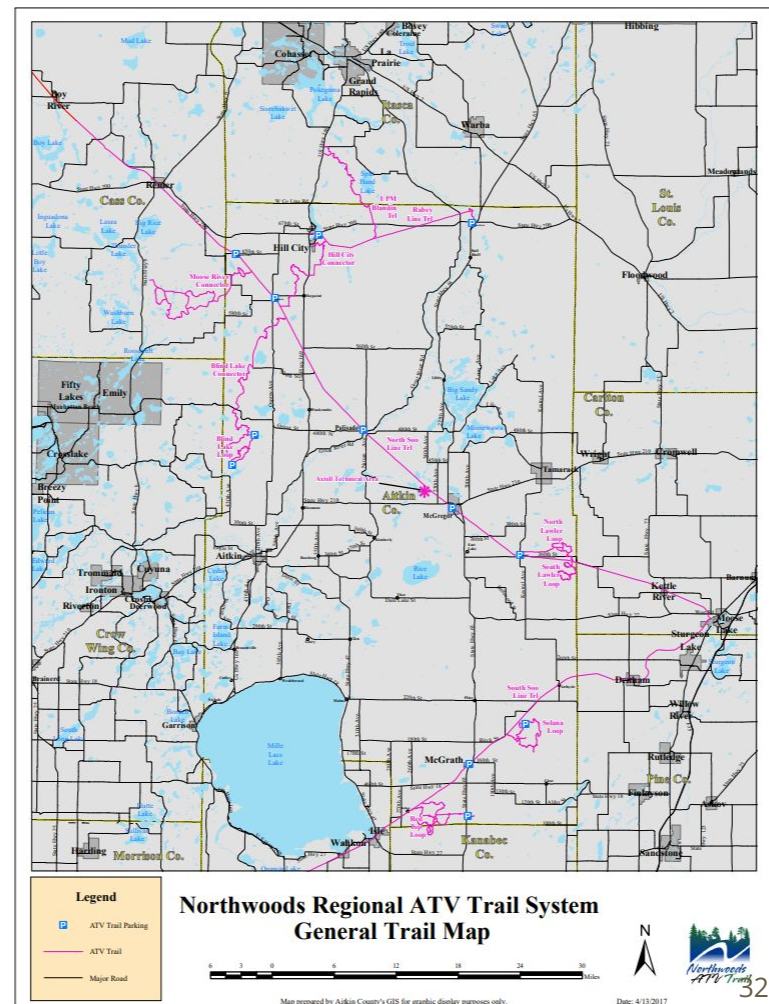
Page 39: Hill City Connector

Page 40: Blind Lake

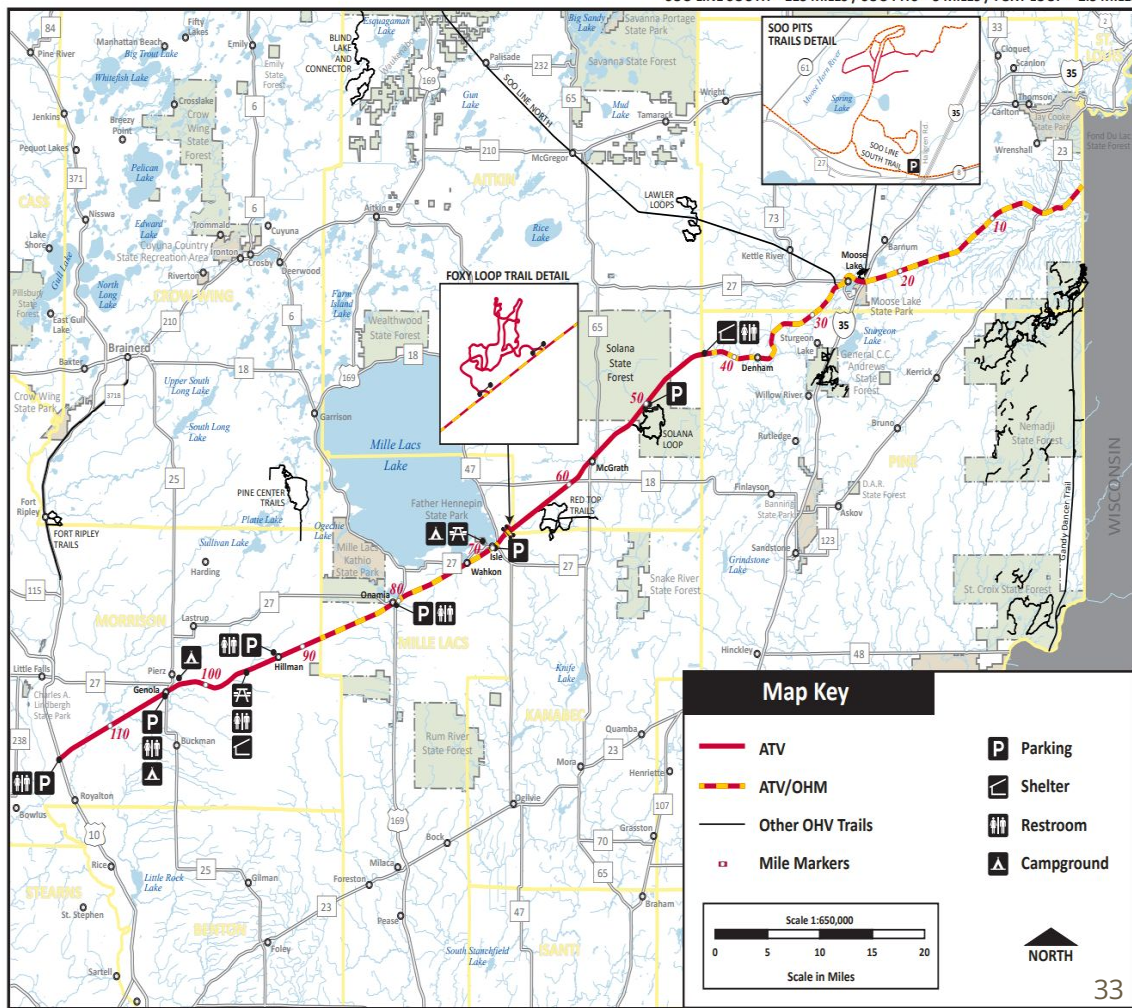
Page 41: Blind Lake Connector

Page 42: Axtell Area

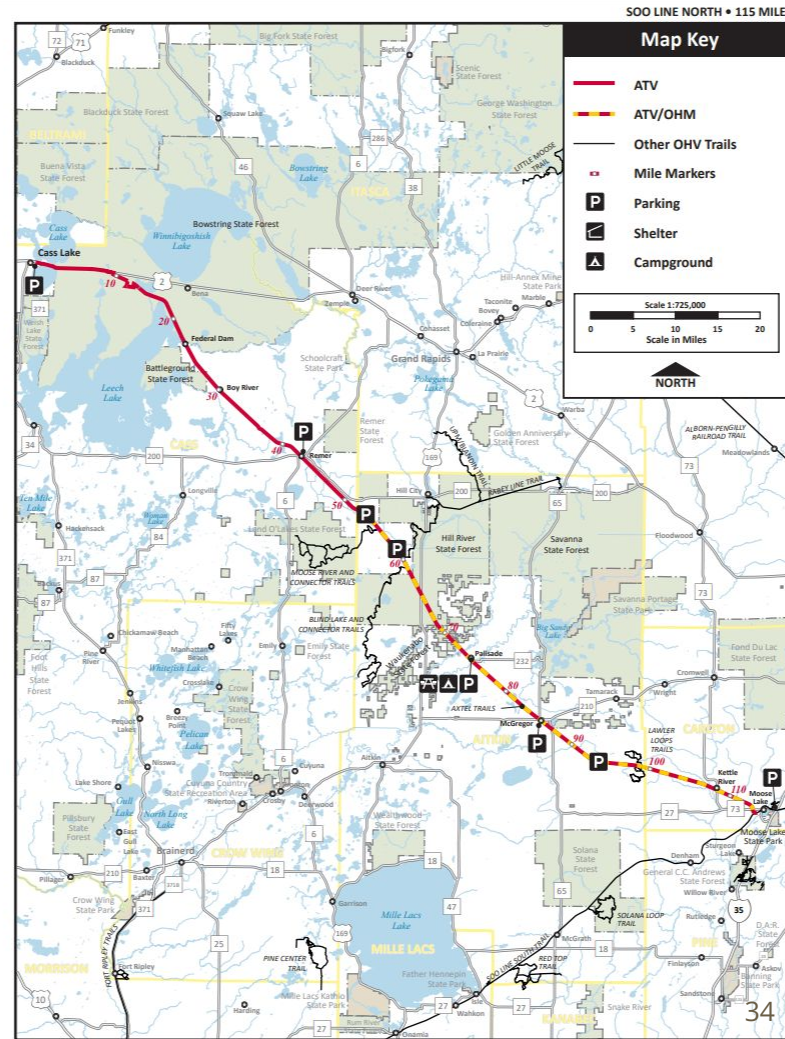
# General Trail Map



# Soo Line South



# Soo Line North



**Legend**

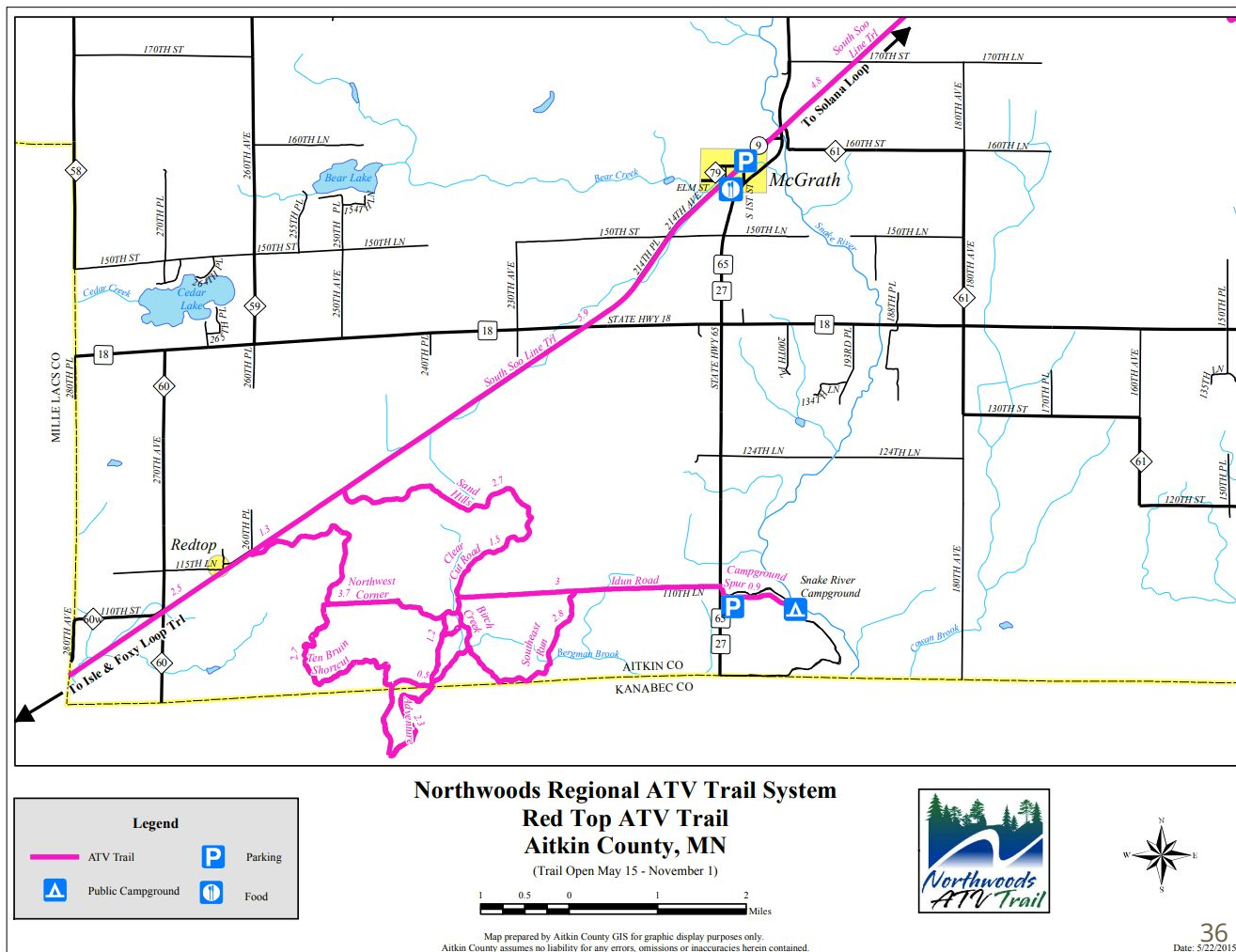
- ATV Trail
- Forest Road
- Parking

**Northwoods Regional ATV Trail System**  
**Solana Loop ATV Trail**  
 Aitkin County, MN  
 (Trail Open May 15 - November 1)

Map prepared by Aitkin County GIS for graphic display purposes only.  
 Aitkin County assumes no liability for any errors, omissions or inaccuracies herein contained.

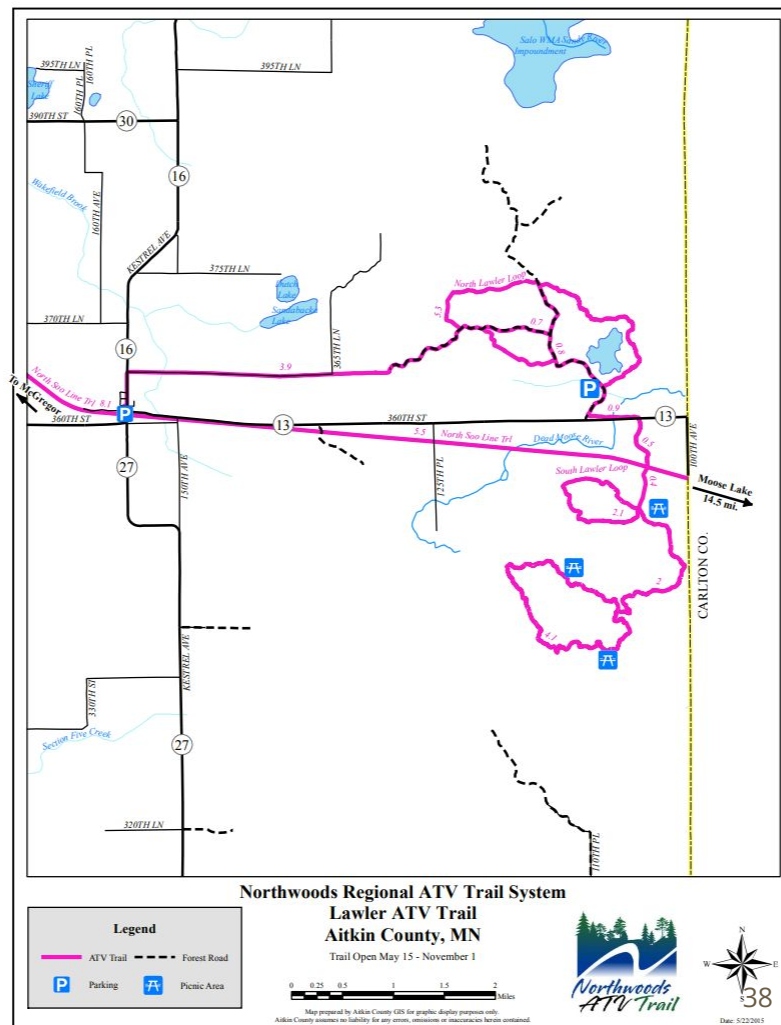
Date: 5/22/2015

# Red Top

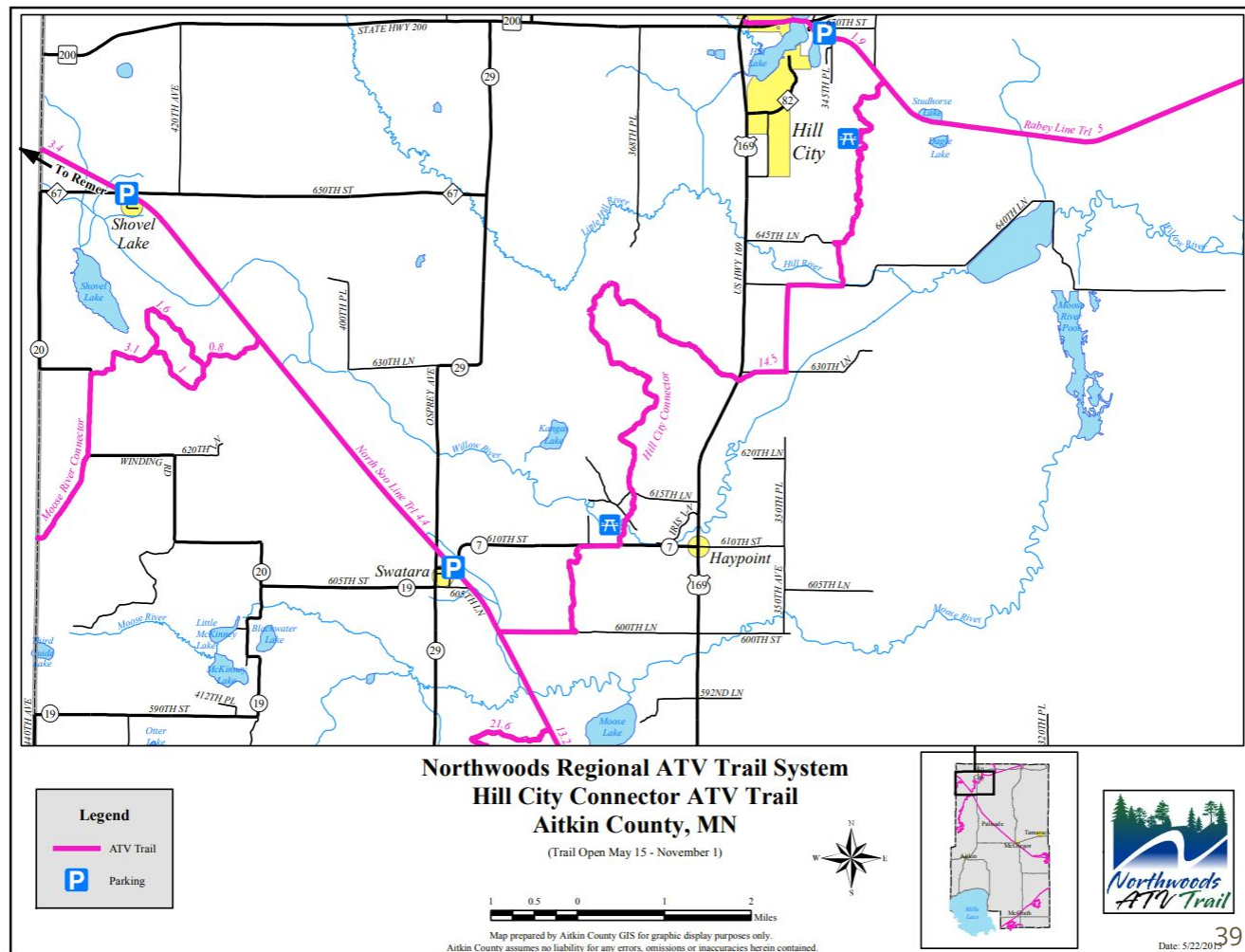




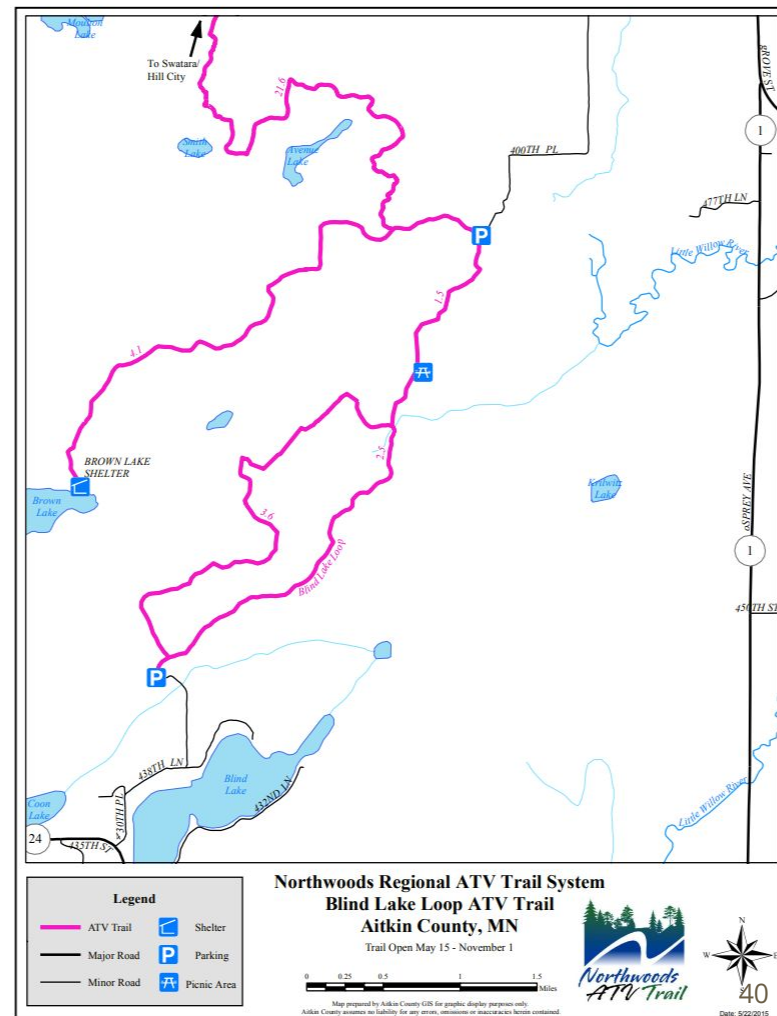
# Lawler



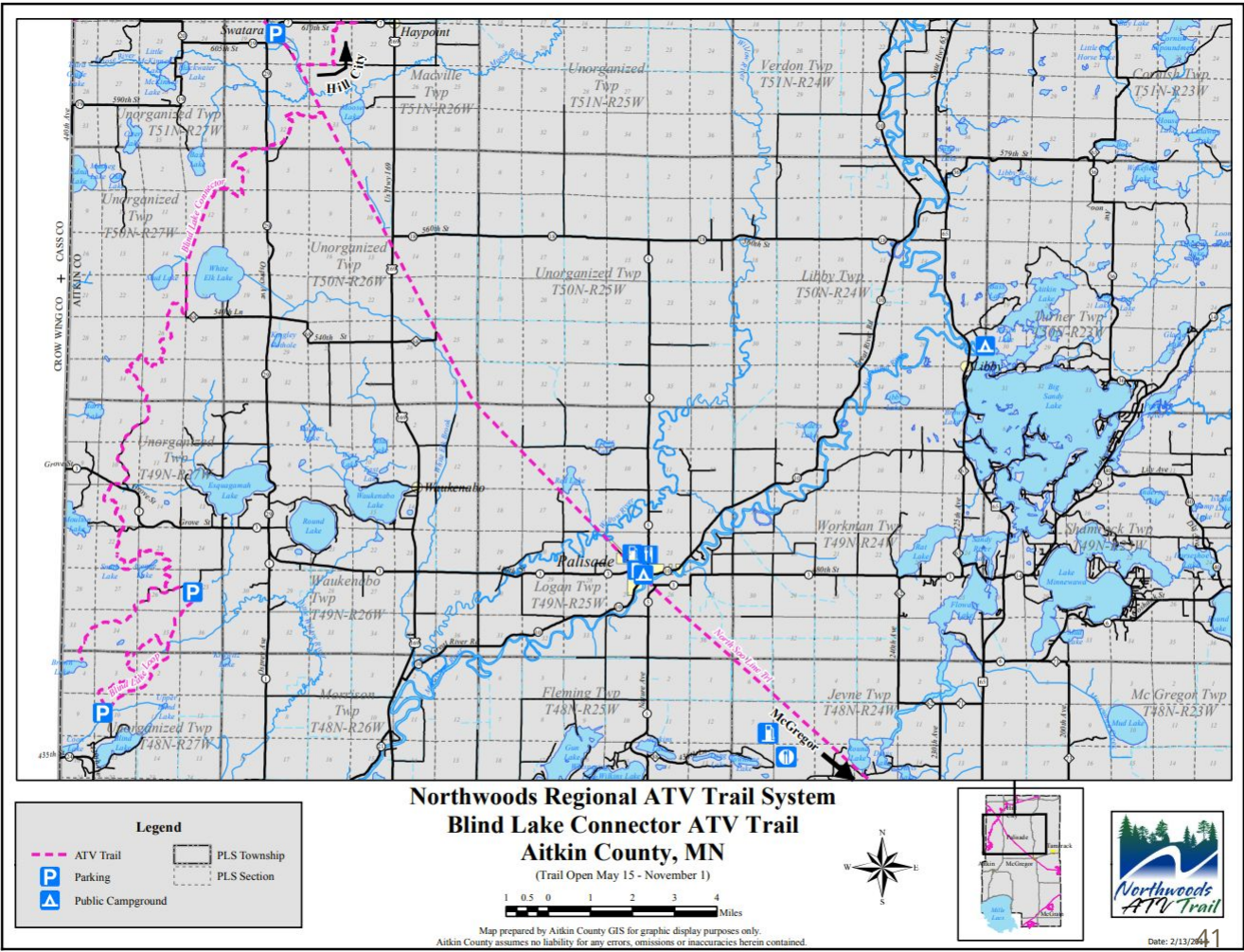
# Hill City Connector



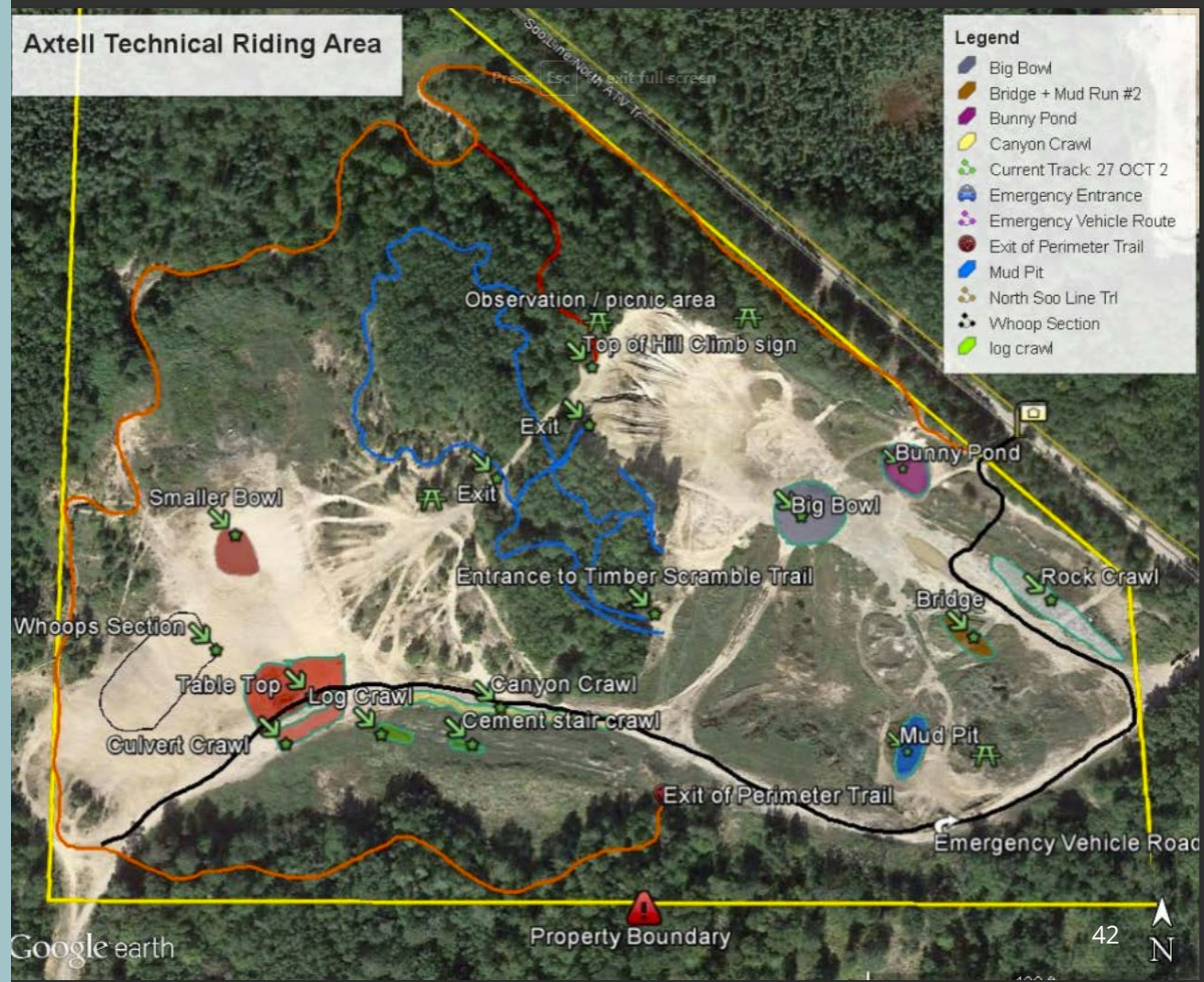
# Blind Lake



# Blind Lake Connector



## Axtell Technical Riding Area



Axtell Area

# Lakes

**Page 44: Gun Lake Area Lakes**

**Page 45: Gun Lake**

**Page 46: Wilkins Lake**

**Page 47: Fleming Lake**

**Page 48: French Lake**

**Page 49: Long Lake Conservation Area**

**Page 50: Rock Lake**

**Page 51: Big Sandy Area Lakes**

**Page 52: Dam and Long Lake**

**Page 53: Waukenabo Area Lakes**

**Page 54: Mille Lacs Lake**

---

## Area Lakes



# Gun Lake



# Wilkins Lake



# Fleming Lake



# French Lake





## Long Lake Conservation Area

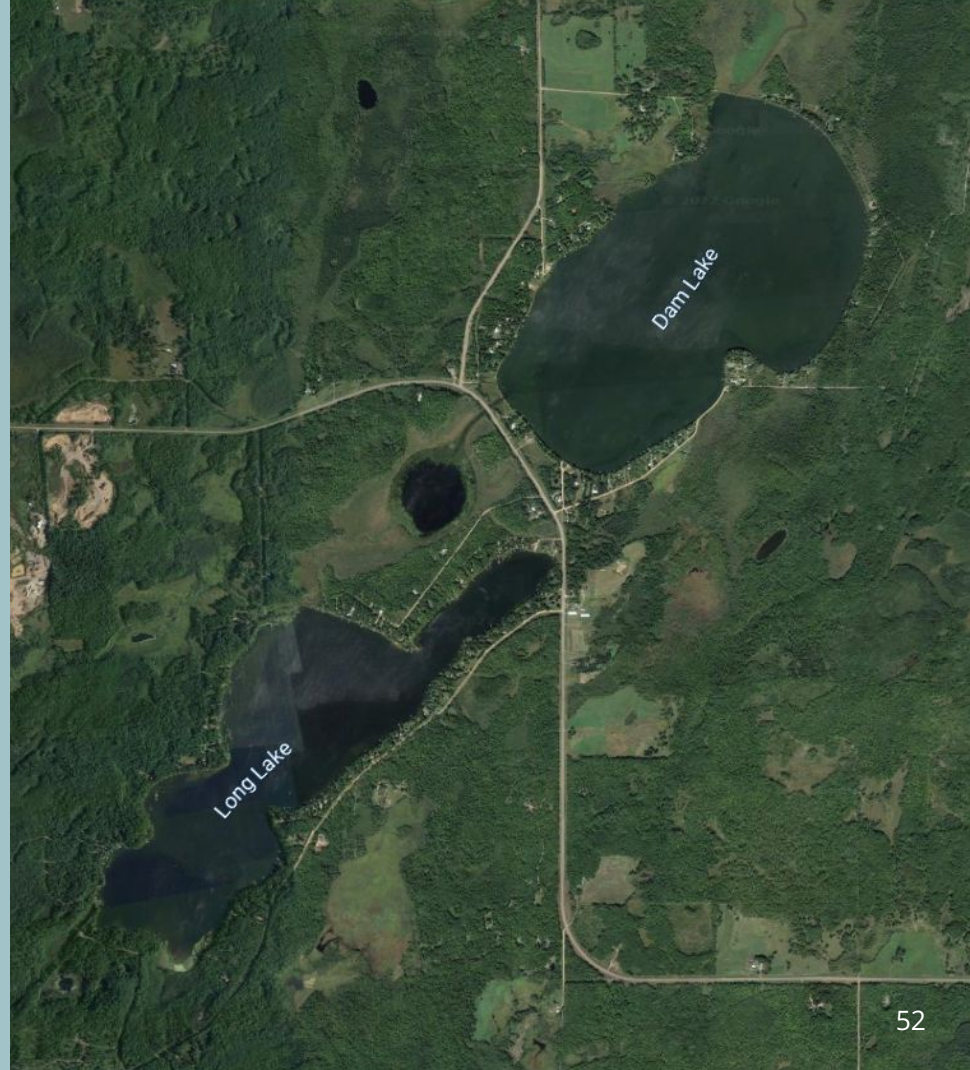
# Rock Lake



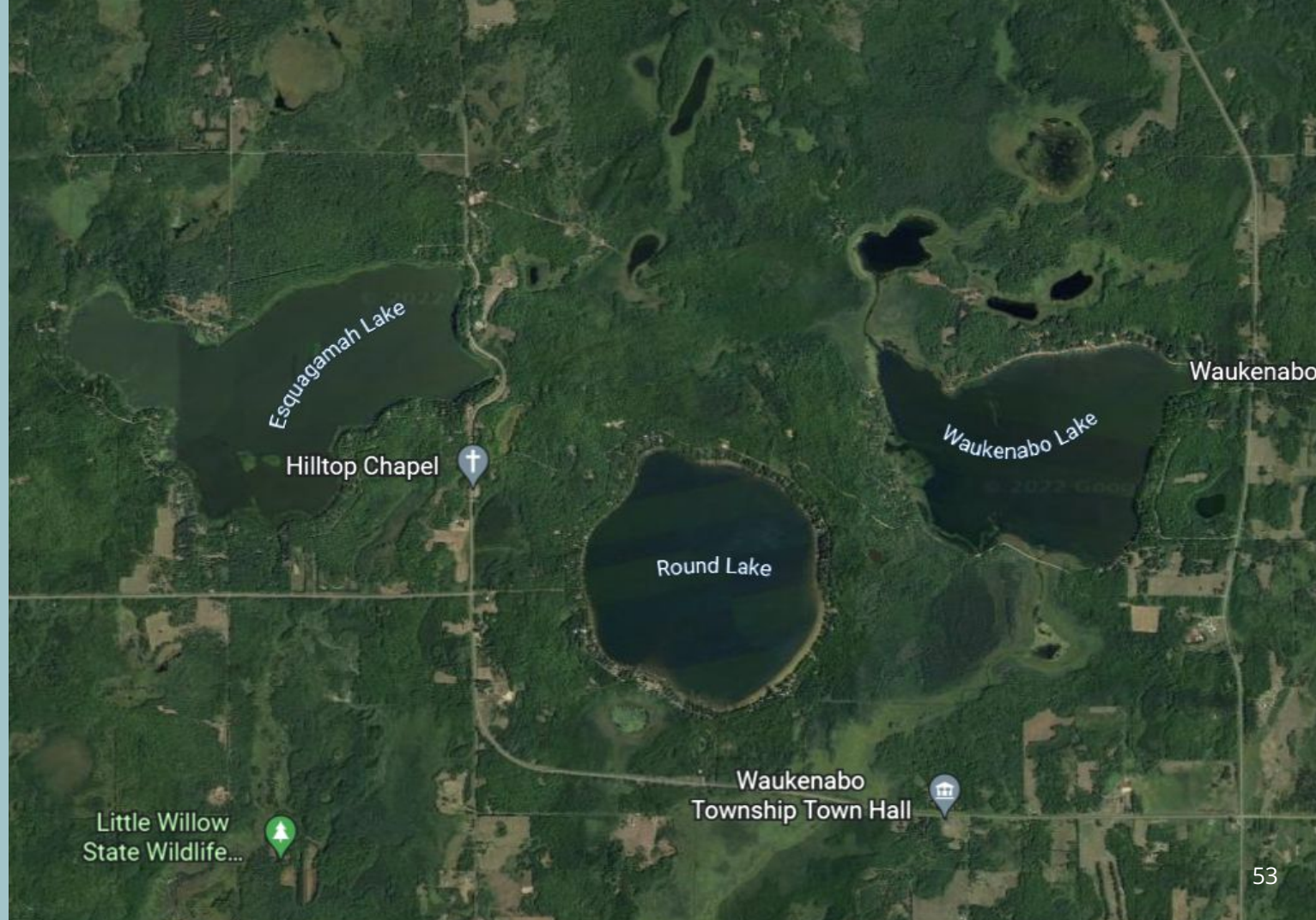
## Big Sandy Area Lakes



## Dam and Long Lake



## Waukenabo Area Lakes



# Mille Lacs Lake

